

Capital Asset Advisory Committee
2018 Capital Improvement Program
Financial Status as of March 15, 2021

March 18, 2021

2018 CAPITAL IMPROVEMENT PROGRAM – FINANCIAL STATUS 3/15/2021

Revenue

\$ 567,000,000	Bond Issuance
\$ 50,165,349	Premium on First Bond Issuance
\$ 68,309,148	Premium on Second Bond Issuance
\$ 11,794,372	Interest Through January 2021, net of bank fees
\$ 51,353,182	Fiscal Years 2019, 2020 and 2021 Capital Transfers (COP Principal & Interest Payments Removed)
\$ (2,948,716)	Issuance Costs (Both issuances)
\$ 745,673,335	

Expenses

As of March 15, 2021

\$ 288,953,852	Total Expended - All projects
\$ 109,715,881	Total Encumbered - All projects

Charter Projects

\$ 43,909,691	Total Expended - Charter
\$ 3,345,891	Total Encumbered - Charter

15 Contracts on April 8 BOE Agenda for Approval

As of February 15, 2021

\$ 272,190,328	Total Expended - All projects
\$ 97,937,557	Total Encumbered - All projects

\$ 42,442,388	Total Expended - Charter
\$ 4,085,001	Total Encumbered - Charter

2018 CAPITAL IMPROVEMENT PROGRAM – FINANCIAL STATUS 3/15/2021

Funding Breakdown 2018 Capital Improvement Program

\$	567,000,000	First & Second Bond Issuances
\$	50,165,349	Premium on First Bond Issuance
\$	68,309,148	Premium on Second Bond Issuance
\$	11,794,372	Bond Interest Through January 2021, Net of Bank Fees
\$	51,353,182	FY 2019, 2020 & 2021 Capital Transfers (COP Principal & Interest Removed)
\$	(2,948,716)	Issuance Costs (Both Issuances)
<hr/>		
\$	745,673,335	Funds to Date
	TBD*	Future Bond Interest Earnings
\$	83,601,924	4 Years Capital Transfer
	TBD*	Interest on Capital Transfer
<hr/>		
\$	829,275,259	Preliminary Total

TBD* To Be Determined

2018 CAPITAL IMPROVEMENT PROGRAM – FINANCIAL STATUS 3/15/2021

March 4 BOE Items

Consultant Contracts: Evergreen High,

Construction Contracts Bid: Ryan ES, Dennison ES, Sheridan Green ES, Miller Special, Kullerstrand ES, D'Evelyn Jr./Sr. HS, Marshdale ES Replacement, DW Paving, DW Playgrounds I,

Construction Contracts to be Bid: Allendale ES, Devinny ES, Carmody MS, Stott ES, Vanderhoof ES

April 8 BOE Items

Construction Contracts to be Bid: Chatfield HS, Dakota Ridge HS, Everett MS, Westridge ES, 5th Floor Ed Center

2018 CAPITAL IMPROVEMENT PROGRAM – FINANCIAL STATUS 3/15/2021

Work in Progress

Alameda Addition / Renovation
Columbine HS Aux Gym, Exterior Entry
Conifer HS Aux Gym
Golden HS Artificial Turf & Track
Green Mountain HS Aux Gym
Jefferson Jr./Sr. HS Addition / Renovation
Kendrick Lakes ES Replacement
Bell MS Addition
Manning School Addition
Parmalee ES Addition / Renovation
Foster ES Addition / Renovation
Warren Tech South
Wayne Carle MS Addition
Lumberg ES Addition / Renovation
Pomona HS Addition/Renovation
Artificial Turf & All-Weather Tracks @ 4 HS
LED Replacement Phase I Districtwide
Security Cameras Districtwide

2018 CAPITAL IMPROVEMENT PROGRAM – FINANCIAL STATUS 3/15/2021

In Design

Evergreen HS Renovation

Evergreen MS Addition/Renovation

Powderhorn Addition/Renovation

Prospect Valley ES Replacement

Ralston Valley HS Addition/Renovation

Standley Lake HS Addition/Renovation

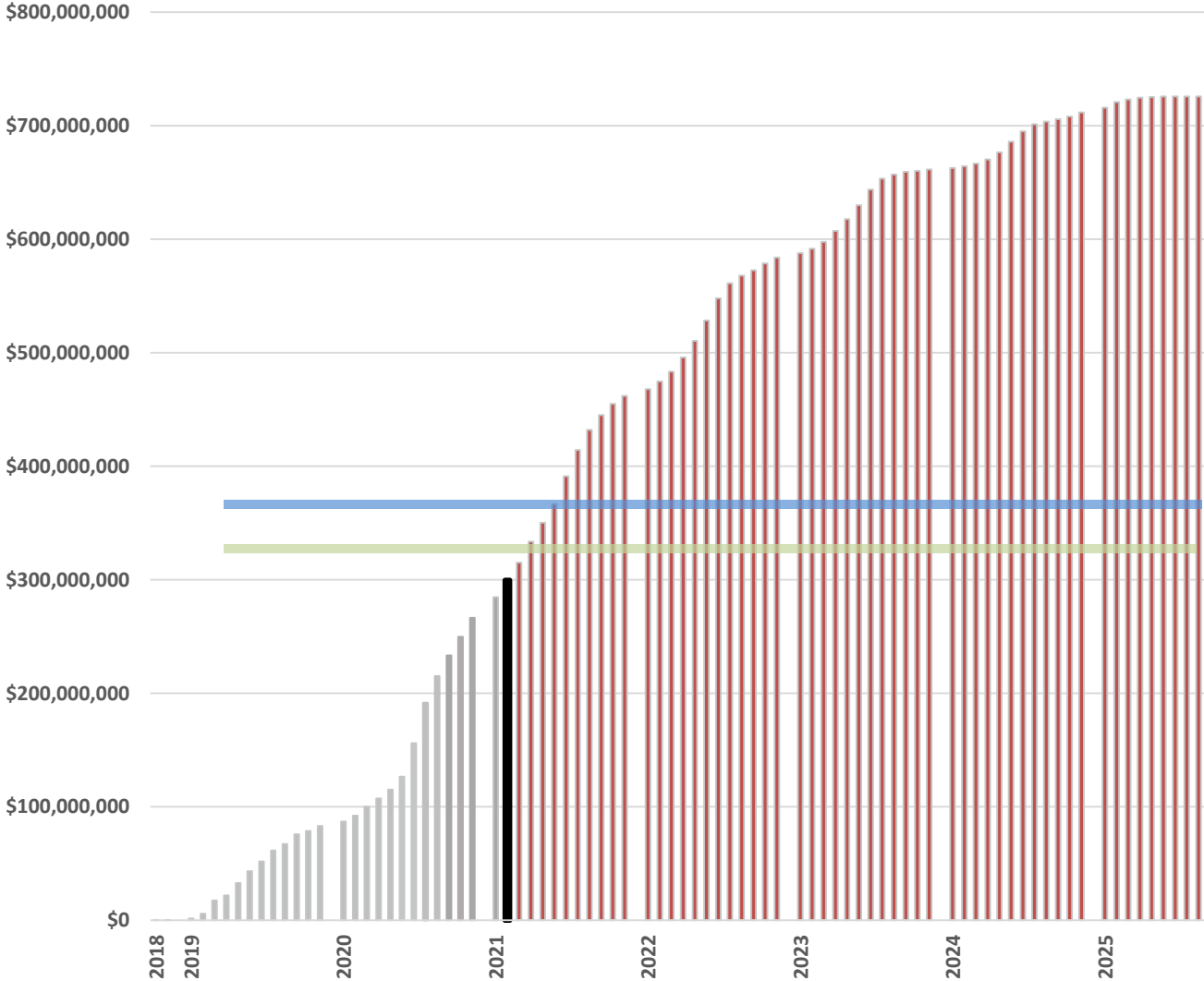
Jeffco Open School Addition/Renovation

LED Replacements

Furniture, Fixtures & Equipment (FF&E) 14 Sites

2018 CAPITAL IMPROVEMENT PROGRAM – FINANCIAL STATUS 3/15/2021

Cash Flow





CAAC Design and Construction Update

3-18-2021

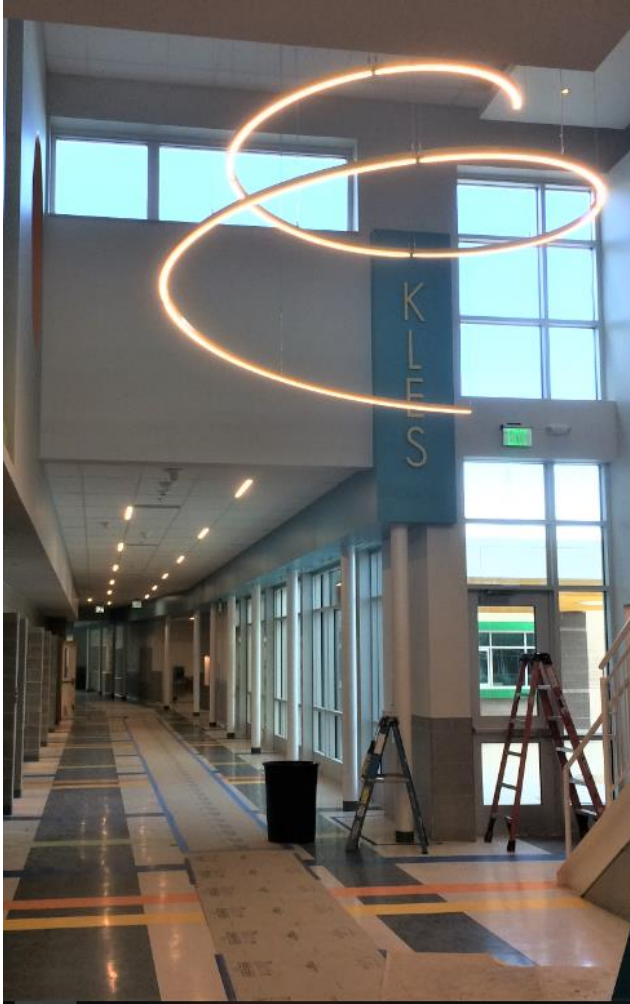


2021 Projects

New Buildings & Additions

Kendrick Lakes ES – Replacement Larson Incitti – GC Roche

Complete
Move-In
Spring Break



Conifer HS – Addition Cannon – CMGC FCI

Construction



Columbine HS – Addition EIDOS – CMGC Swinerton

Construction



Green Mountain HS – Addition MOA – CMGC GE Johnson

Construction



Jefferson HS – Aux Gym Addition MOA – CMGC Haselden

Construction



Alameda HS – Addition WOLD – CMGC Phipps

Construction



CTE South – New Building HCM – JHL



Manning Opt – 1 Story – 7 Classroom Addition AMD – Fransen Pittman

Construction



Bell MS – 1 Story, 4 Classroom Addition Eidos – Golden Triangle

Construction



Wayne Carle – 2 Story – 8 Classroom Addition RB+B – Basset



Construction

On Float
Report
8/25/21

Delay
Code Fire
Wall
Requirement



Lumberg ES – 4 CR Addition MOA – CMGC Haselden

Construction



Parmalee ES – 1 Story –
6 Classroom Addition
OZ – Saunders

Construction



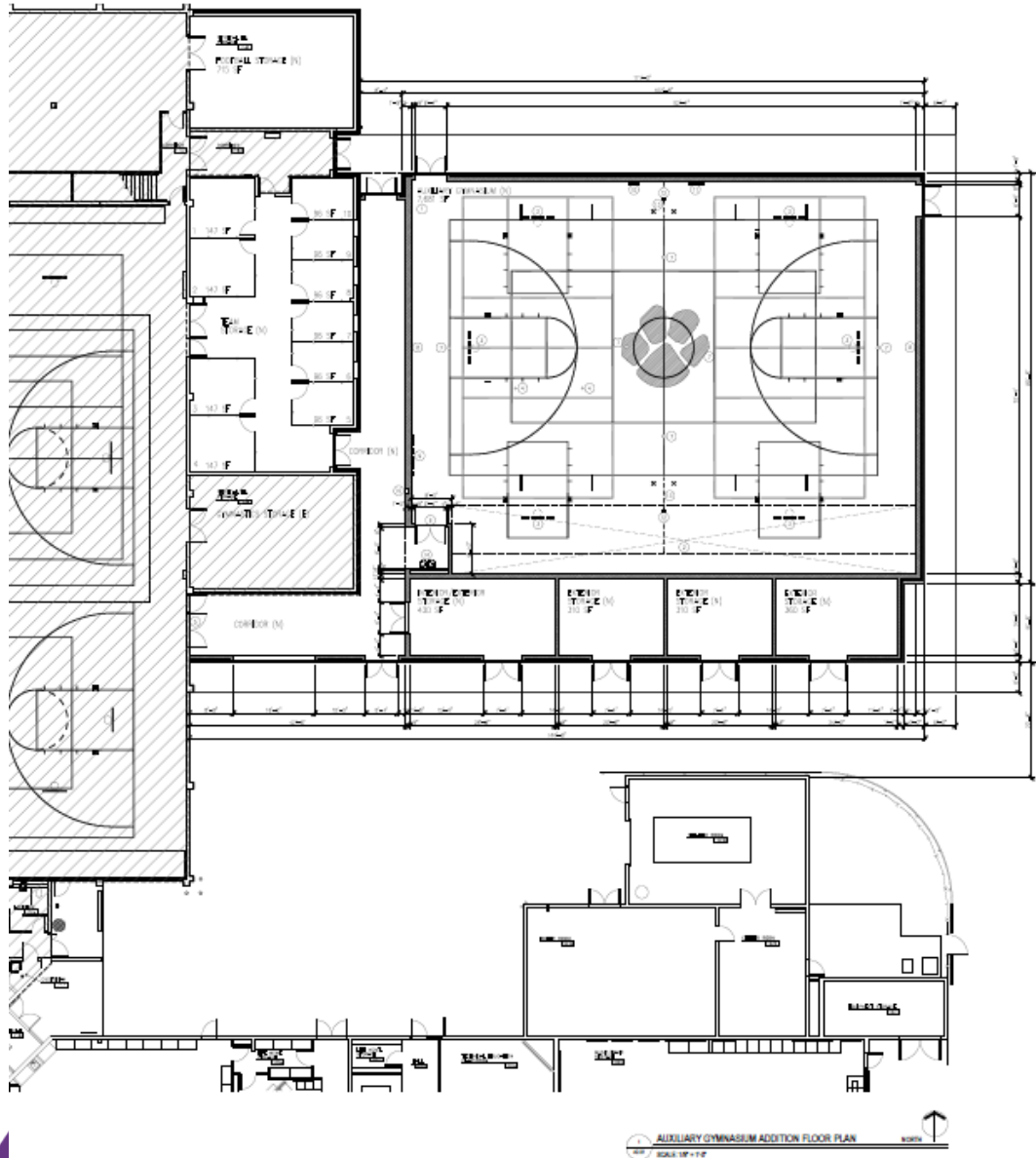
Foster ES – 1 Story – 7 Classroom Addition Larson Incitti – GE Johnson

Construction



Pomona HS – Aux Gym Addition Sybazz – CMGC Saunders

GMP
\$7,546,500
Budget
\$7,259,520



D'Evelyn – Addition & Efficiency Future Ready HCM - TBD



Bid 3/11
EFR
\$777,700
Roche

Budget
\$705,000

\$72,000
Over Budget

Bid 3/11
Addition
& Alt 9
Himmelman
\$4,139,000

EFR
Himmelman
\$810,000

\$105,000
Over Budget

Total
\$4,949,000

Marshdale ES - Replacement

Bid 3/16

HCM - TBD



JEFFCO PUBLIC SCHOOLS | MARSHDALE ELEMENTARY SCHOOL

SCHEMATIC DESIGN PACKAGE

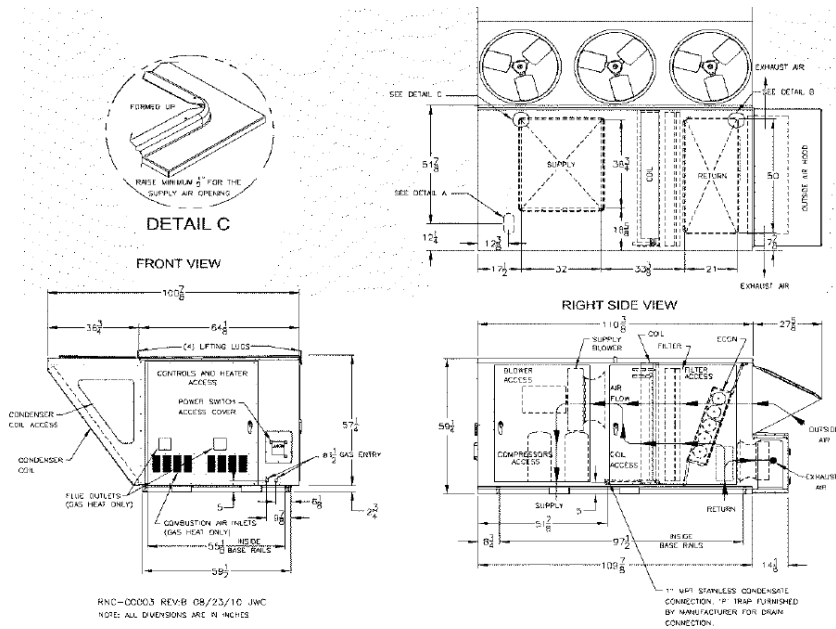
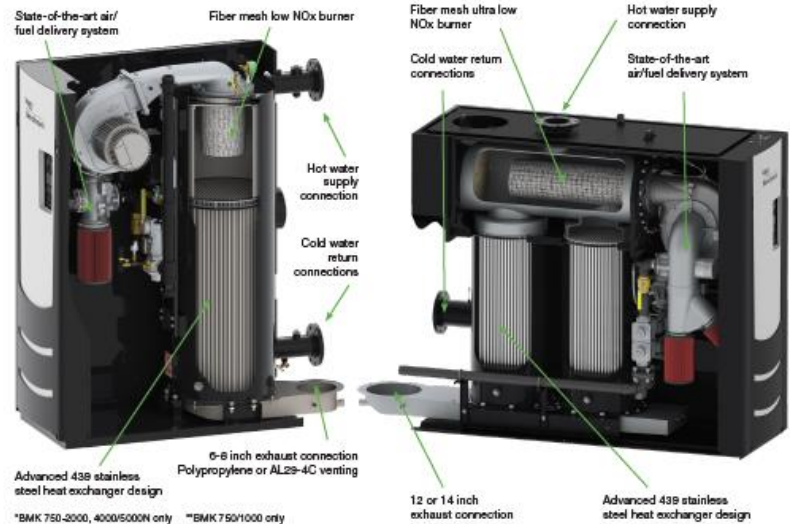
10.16.2020

hord | coplan | macht

2021 24 Efficiency Future Ready & DW projects

DW Mechanical – 5 Schools Elk Creek ES (RTU), Edgewater ES (Boiler), Peck ES (Boiler) Secrest ES (RTU's) , Thomson ES (RTU)

Columbine – US Engineering



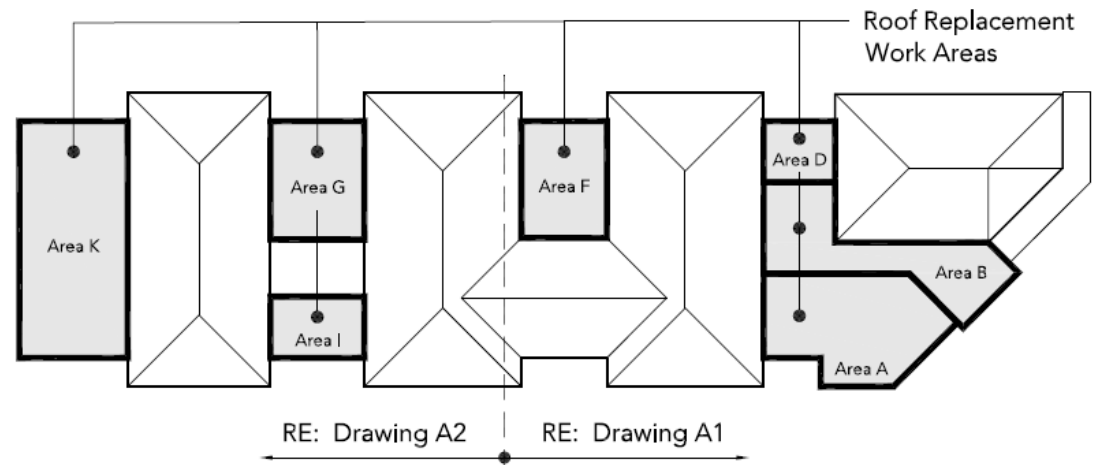
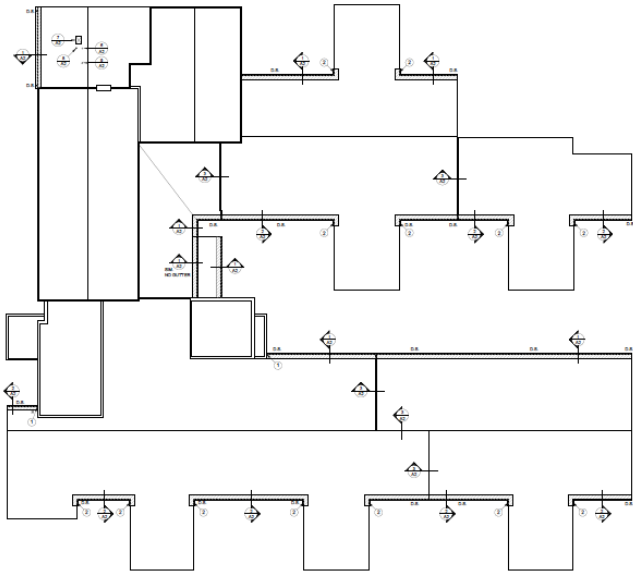
DW Roofing – 3 Schools

Construction

D'Evelyn Opt - SR-DK – Arapahoe - COMPLETE

Fitzmorris ES - SR-DK – Arapahoe

Lawrence ES - SR-DK – United Materials



DW Roofing – 3 Schools

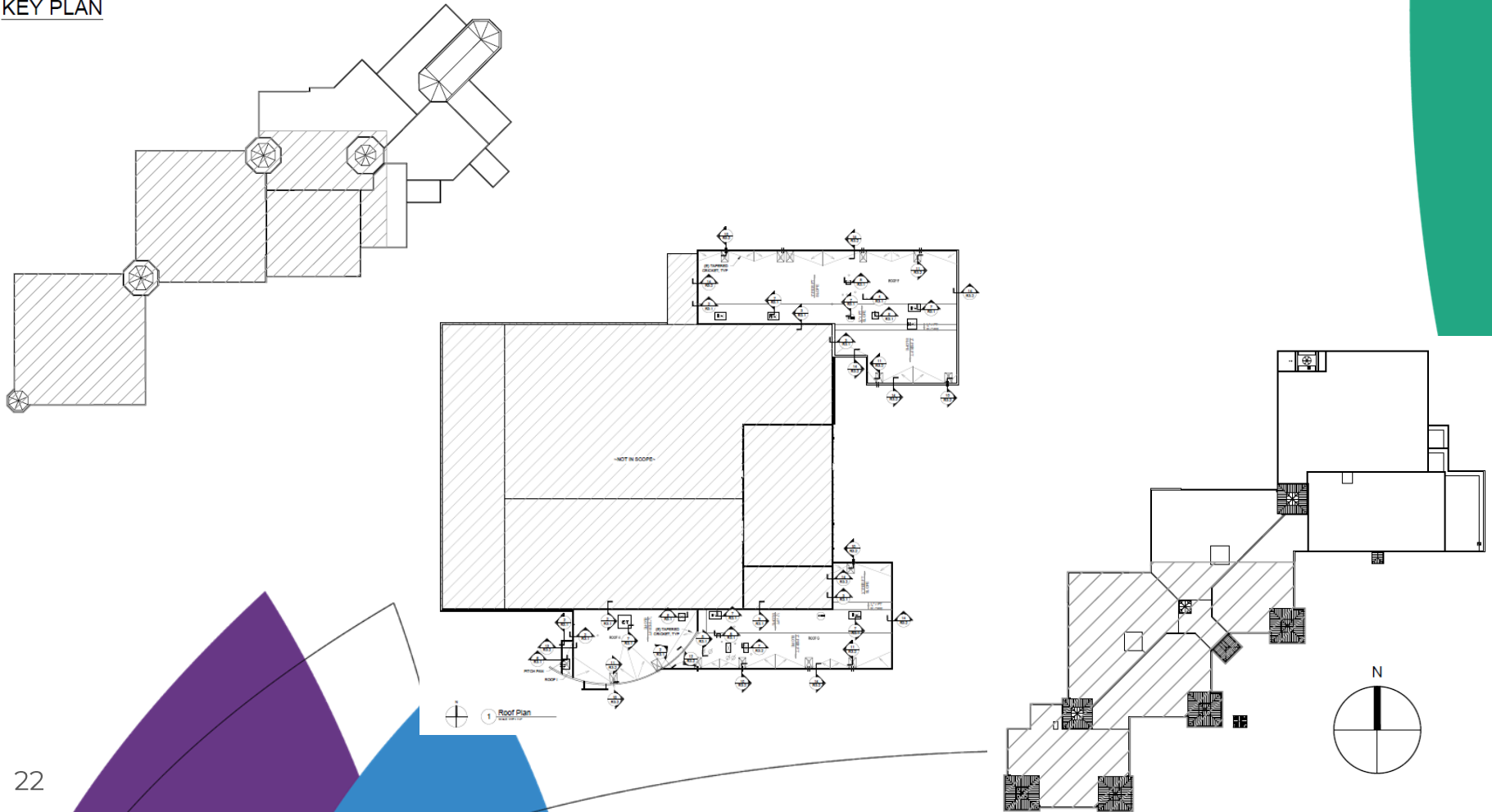
Emory ES - WJE - Powers

Westgate ES – WJE - United Materials

Stevens ES - WJE - Douglass

Construction

KEY PLAN



Maple Grove ES Efficiency Future Ready RTA – Golden Triangle

Construction



Kyffin ES
Efficiency Future Ready
Eidos – GH Phipps

Construction



Fitzmorris ES
Efficiency Future Ready
Eidos – Himmelman

Construction



Lawrence ES
Efficiency Future Ready
Eidos – Bryan Construction

Construction



Brady - Efficiency Future Ready

Construction

Alan Ford –Himmelman



Deane ES
Efficiency Future Ready
LOA – GH Phipps

Bid 2/18
\$444,996
Budget
\$496,437

\$51,441
under Budget



Lasley ES
Efficiency Future Ready

Treanor HL – PG Arnold



Bid 2/23
\$369,100
Budget
\$319,291

\$49,809
Over Budget

Patterson ES & Cottage Efficiency Future Ready

Treanor HL – PG Arnold

Bid 2/19 ES
\$464,500
Budget
\$390,221

\$74,279
Over Budget

Bid 2/19 Cttg
\$208,000
Budget
\$173,329

\$34,671
Over Budget

Includes Temp
Demo & Storage
Shed Scope



Dennison ES
Efficiency Future Ready

Hollis & Miller- MW Golden
All Alternates

Bid 3/4
\$704,944
Budget
\$716,791

\$11,847
Under Budget



Kullerstrand ES
Efficiency Future Ready
Larson Incitti – Himmelman
Alt 2, 3 & 6

Bid 3/10
\$923,700
Budget
\$847,612

\$76,088
Over Budget



Sheridan Green ES Efficiency Future Ready

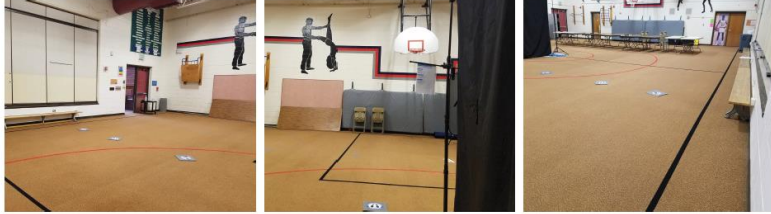
RB+B - Himmelman

Bid 3/11
\$1,055,000
Budget
631,617

\$423,384
Over Budget

ARCHITECTURAL NARRATIVE

Replace Original Sports Court Flooring



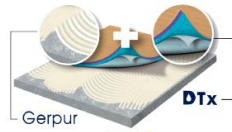
ARCHITECTURAL



SPORTS COURT FLOORING
GERFLOR - TARAFLEX SPORTS M PLUS



MAPLE DESIGN WITH MULTI-COLOR GAME LINES



Gerpur
GERFLOR
= Dry-Tex
SYSTEM
HIGH-MOISTURE FULL-SPREAD ADHESIVE

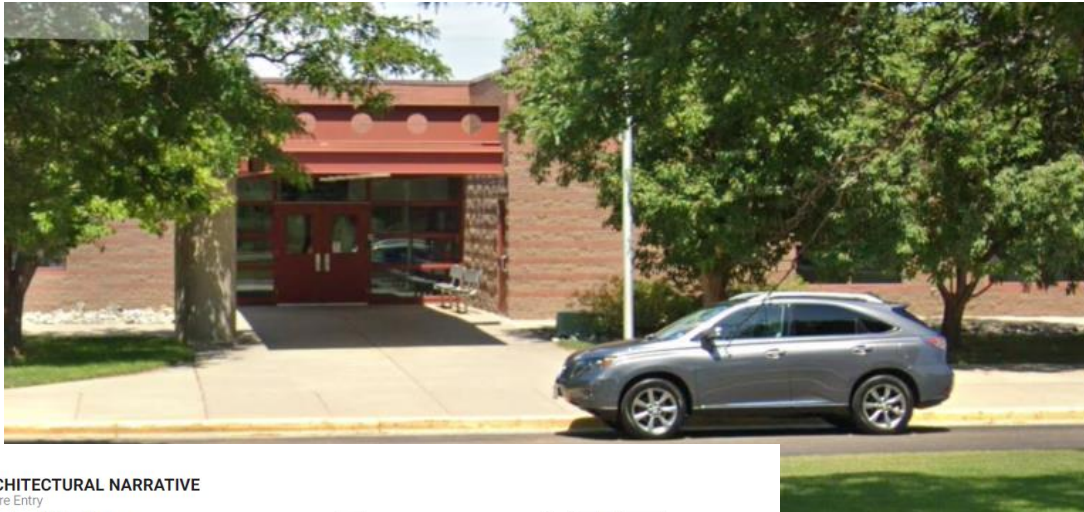
21

SHERIDAN GREEN ELEMENTARY SCHOOL
Schematic Design Submittal



Ryan ES Efficiency Future Ready

RB+B – PG Arnold



Bid 3/11
\$955,800
Budget
\$900,105

Over Budget
\$55,695

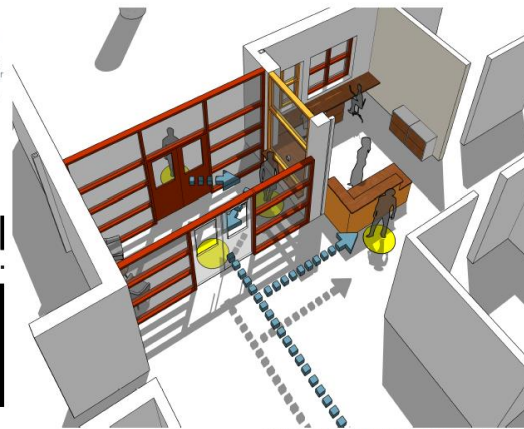
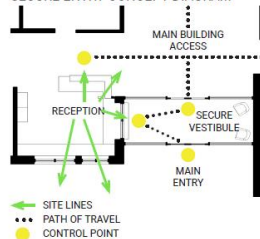
ARCHITECTURAL NARRATIVE

Secure Entry

Vestibule and Entry Changes

The existing hollow metal vestibules exterior and interior openings will remain in-place and only be modified to accept electronic strikes/access controls. The west wall of the vestibule will be opened to receive a new transaction window. The south exterior wall will be opened to receive a new exterior hollow metal window, allowing for enhanced visibility to any approaching visitors. The reception area will be re-configured to allow for three full workstations and better visibility to the main school corridor.

SECURE ENTRY CONCEPT DIAGRAM



PERSPECTIVE of SECURE ENTRY CONCEPT
Changes Highlighted in Orange

Miller Special School
Efficiency Future Ready
Larson Incitti –Himmelman

Bid 3/17
\$1,386,000

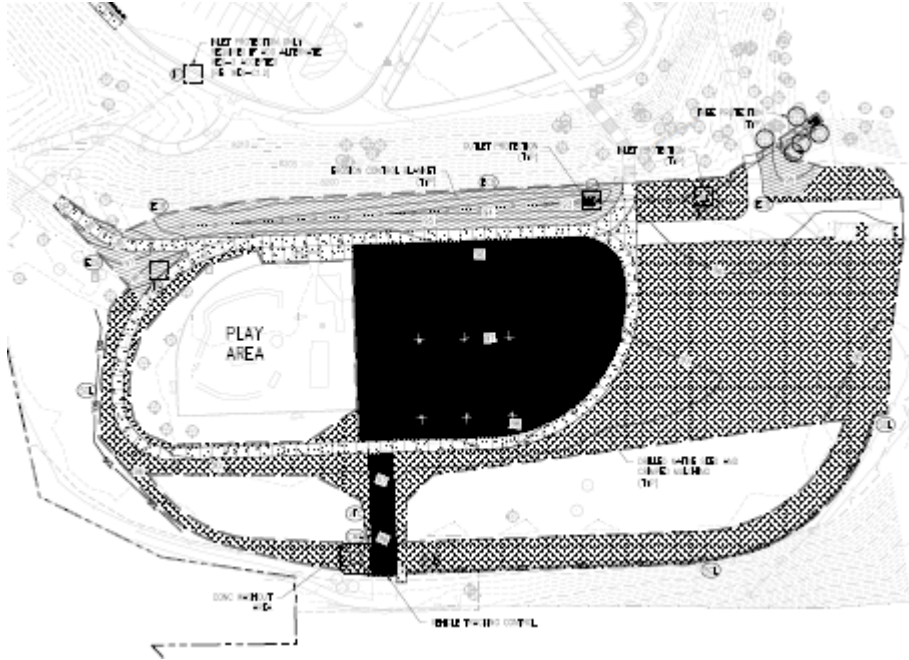
Budget
\$1,196,109

\$189,891
Over Budget



DW – Paving West Jefferson ES, Red Rocks ES

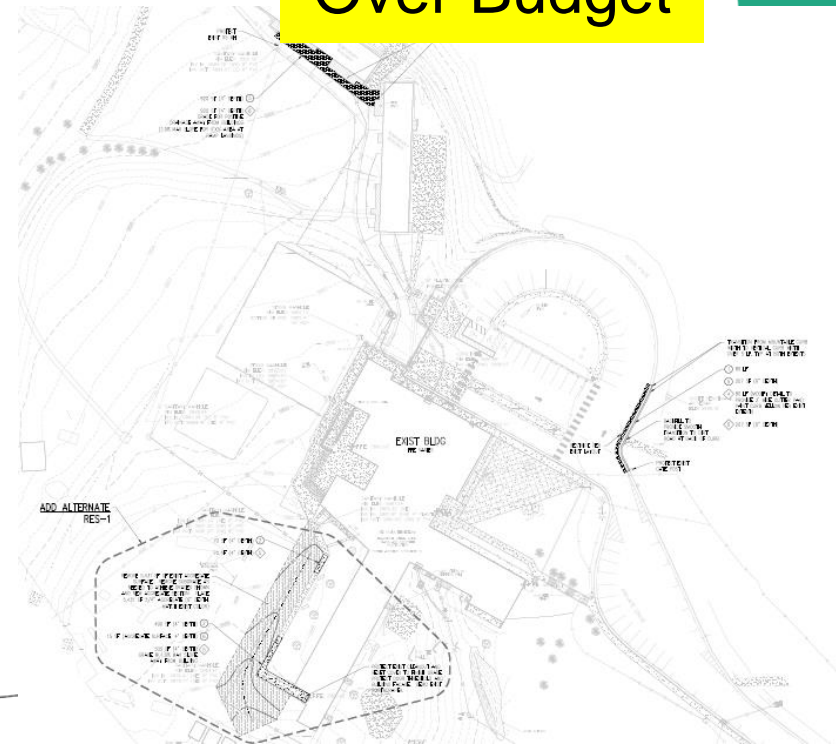
JVA – Concrete Express



Bid 3/17
\$522,000

Budget
\$505,050

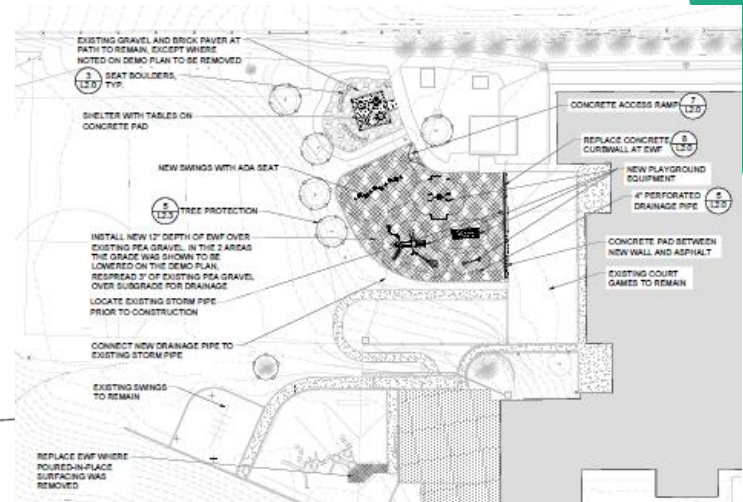
\$16,950
Over Budget



DW – Playgrounds I – Group A Kyffin ES, Red Rocks ES, Peck ES

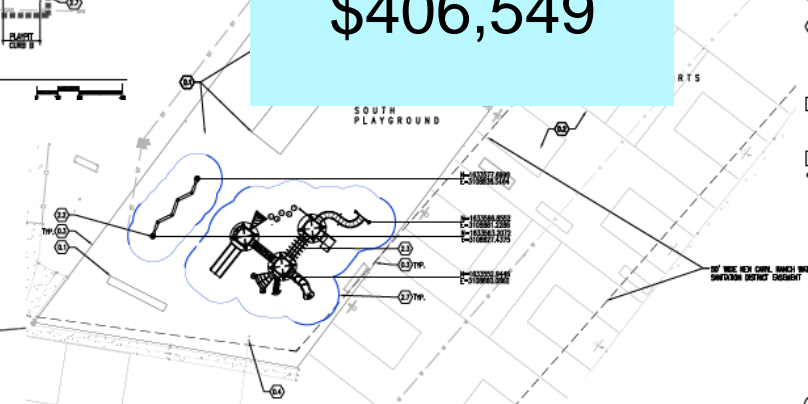
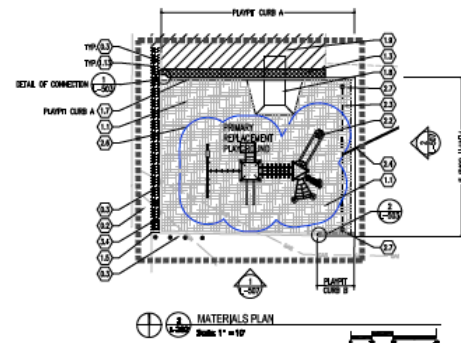
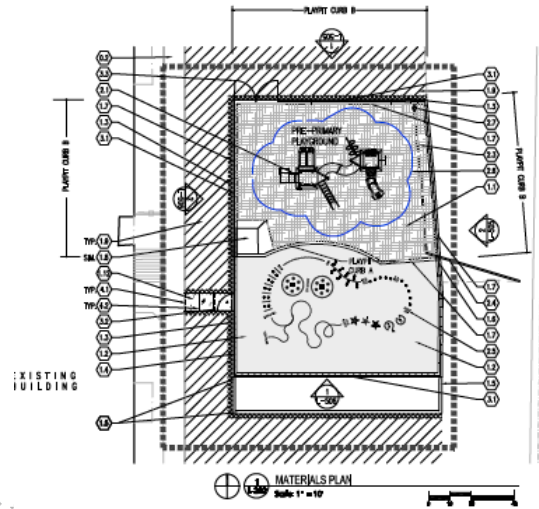
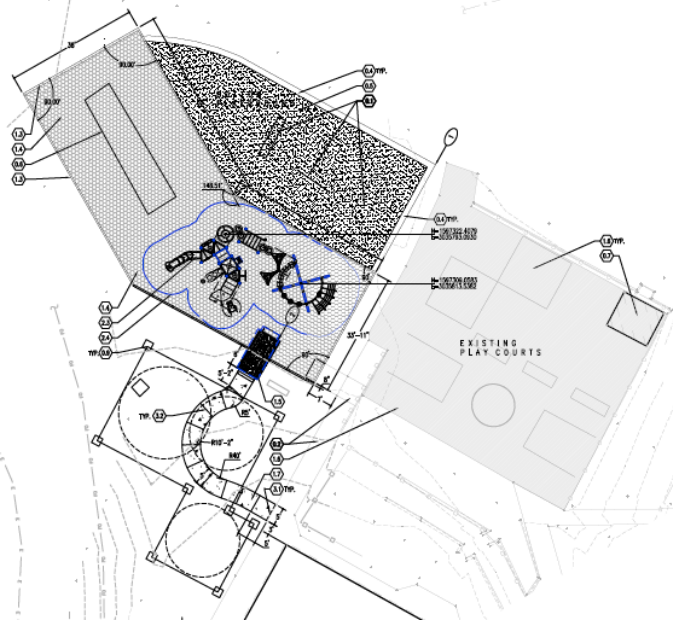
Bid 3/17
\$531,712

Design Concepts – T2



DW – Playgrounds – Elk Creek ES, Normandy ES Shaffer ES

Lime Green - TBD



Bid April
\$?

Budget
\$1,487,666
\$990,000 or (\$110k per school) Added due to under estimate of scope

-\$1,081,117
previous bids

Remaining
Budget
\$406,549

Allendale ES, Stott ES, Vanderhoof ES Efficiency Future Ready EUA – TBD

Bid 3/24



Carmody MS & Devinny ES
Efficiency Future Ready
DLH - TBD

Bid 3/25



Everitt MS & Westridge ES Efficiency Future Ready

Bid April

OZ - TBD



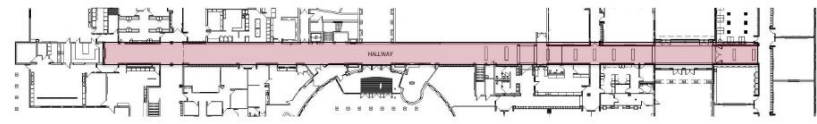
Chatfield HS, Dakota Ridge HS Efficiency Future Ready Cannon - TBD

Bid April

CANNONDESIGN



Dakota Ridge High School Hallway Carpet Replacement



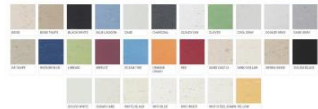
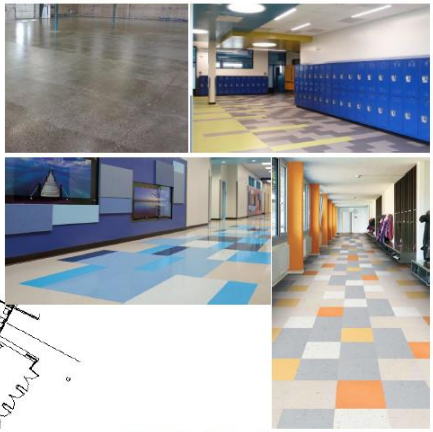
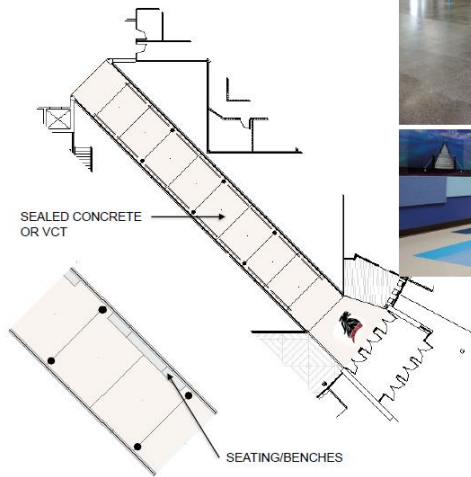
HALLWAY FLOOR FINISH REPLACEMENT



Chatfield High School Bridge



CANNONDESIGN



DW Turf Fields – Alameda HS,
D'Evelyn HS (T&F), Jefferson HS (T&F) &
Wheat Ridge HS (track + drainage)
HCM – CMGC Saunders



AHS
\$2,369,333



WRHS
\$2,525,981

D'Evelyn
\$2,562,097



Jefferson & Lumberg
\$3,140,543 & \$210,600

DW LED 2021 – Ackerman – CMGC McKinstry

GMP April



1. **Columbine Hills ES**
2. **Edgewater ES**
3. **Elk Creek ES**
4. **Emory ES**
5. **Kyffin ES**
6. **Red Rocks ES**
7. **Shaffer ES**
8. **Stevens ES**
9. **Stony Creek ES**
10. **Thomson ES**
11. **Warder ES**
12. **West Jefferson ES**

Security Glass Installation 12 - Schools

Creighton MS	Rose Stein
Red Rocks ES	Mandalay MS
Weber ES	Moore MS
Meiklejohn ES	Drake MS
Ken Caryl MS 95% Complete	Dutch .
Leawood ES Glass on order	Conifer HS



2022 Projects

New Buildings & Additions

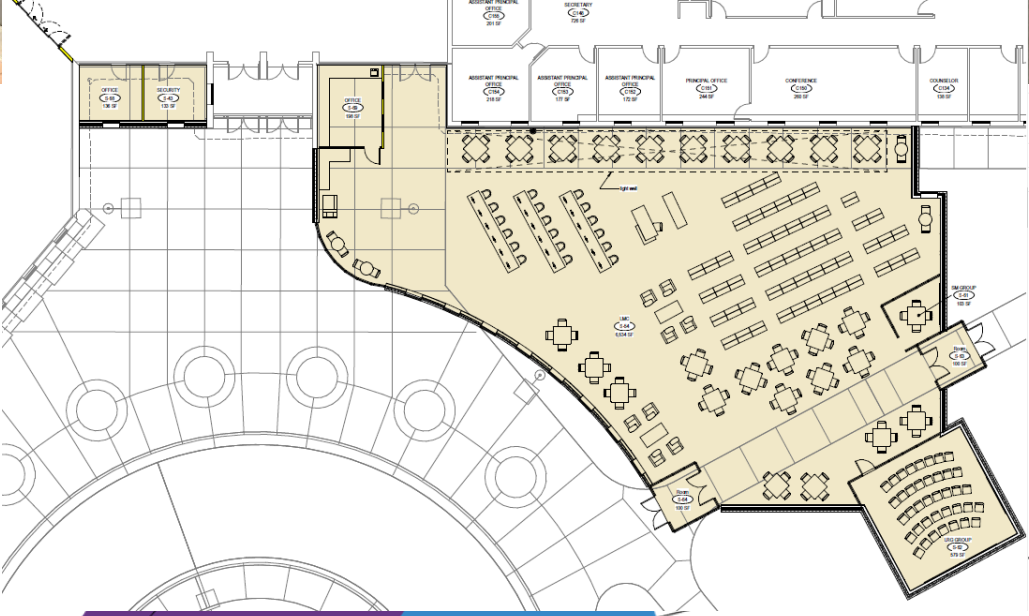
Standley Lake HS - Addition Cannon - TBD

Design
Development
Fall Bid



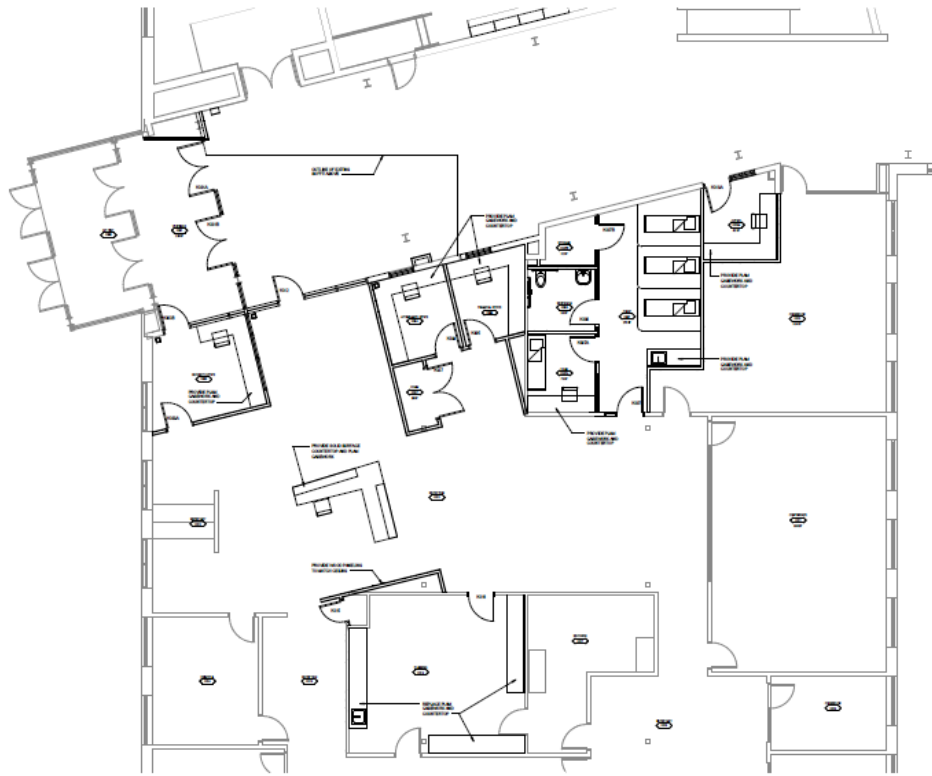
Ralston Valley HS Addition EUA - TBD

Design
Development
Fall Bid



Evergreen HS Efficiency Future Ready DLR - TBD

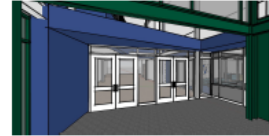
Design
Development
Fall Bid



ENLARGED VESTIBULE PLAN



IMAGES OF PROPOSED SECURITY VESTIBULE AND RECEPTION AREA



VIEW OF VESTIBULE/SECURITY CHECK IN



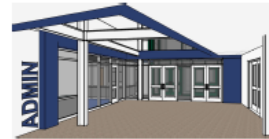
VIEW OF RECEPTION AREA



VIEW OF RECEPTION AREA



VIEW OF RECEPTION FROM CORRIDOR



VIEW OF VESTIBULE FROM CORRIDOR

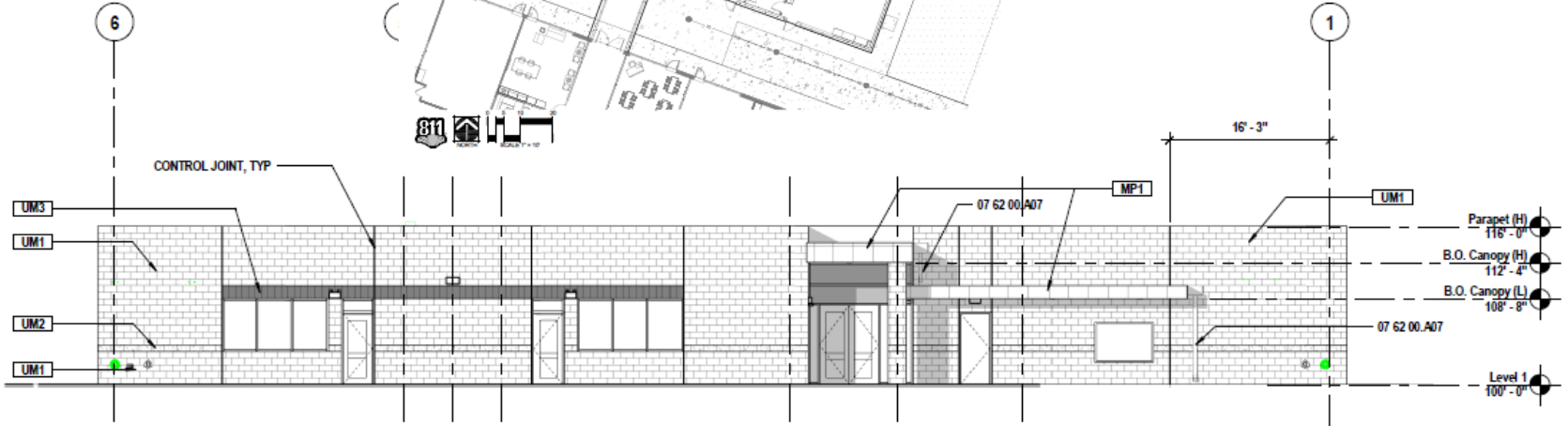
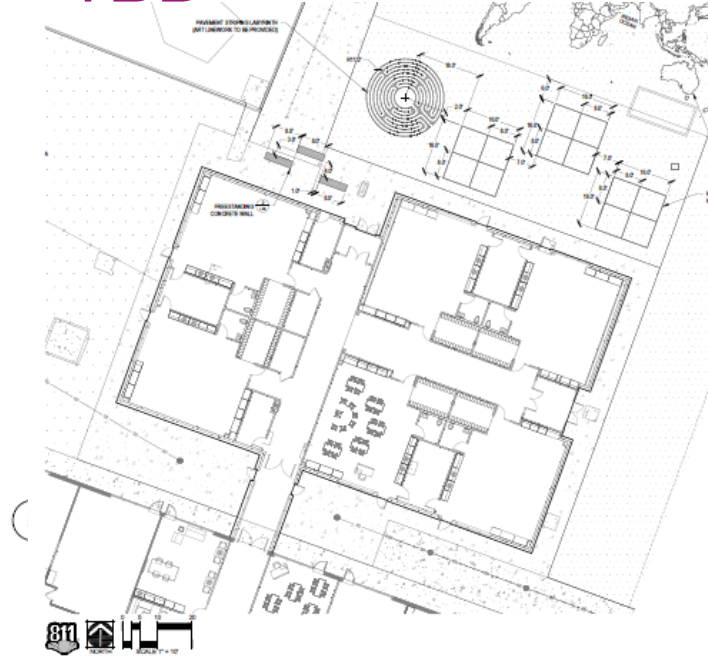
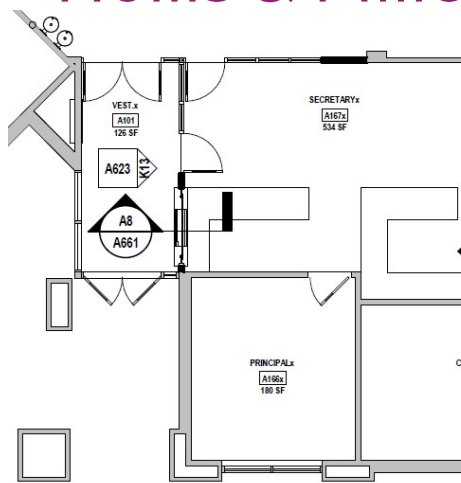
Prospect Valley ES - Replacement MOA - TBD

Design
Development
Fall Bid



Powderhorn ES - Addition Hollis & Miller – TBD

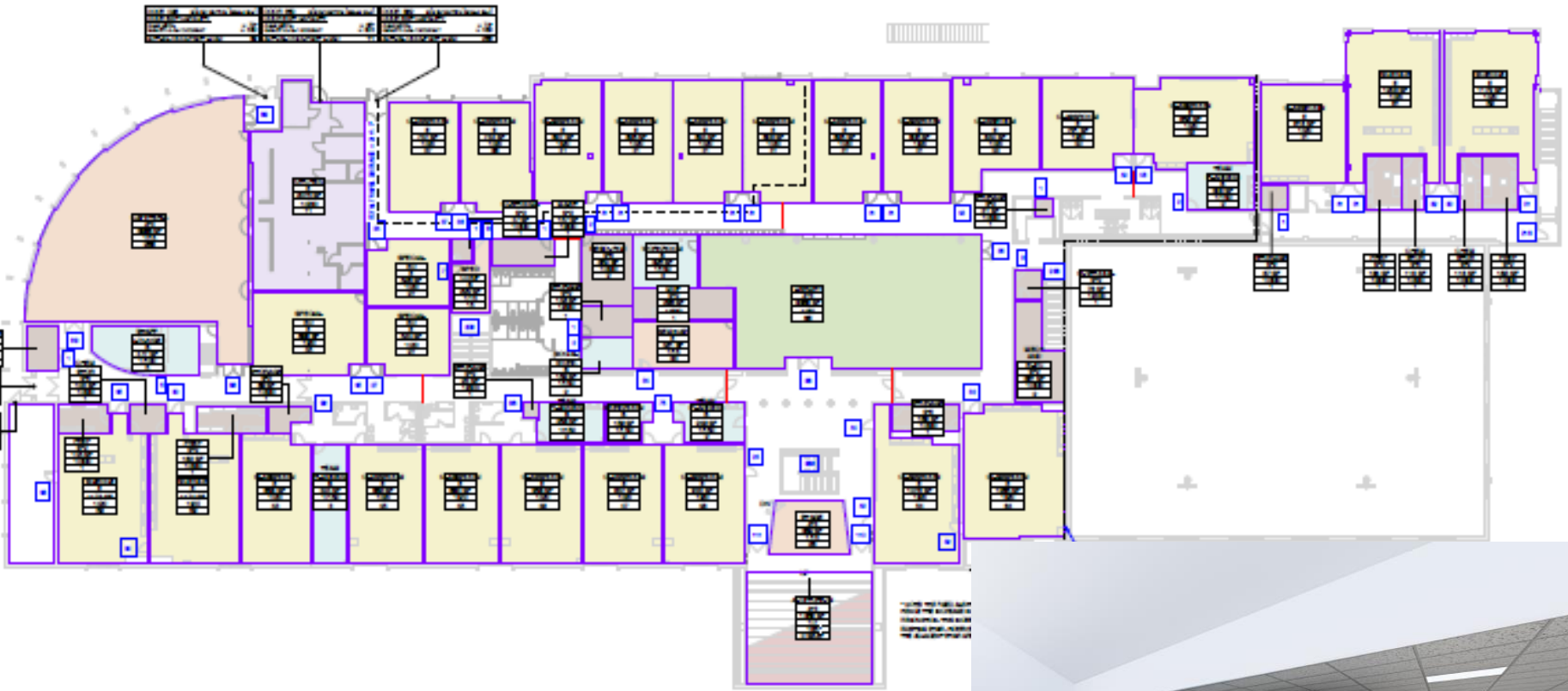
Construction Documents
Fall Bid



N6 Scale North Elevation
1/8" = 1'-0"

Evergreen MS Efficiency & Future Ready AMD - TBD

Design
Development
Fall Bid



2022

44 - Efficiency
Future Ready
&
DW projects

Location	Sched	Program	Description	A/E	Approximate Construction Budget	Project Budget	Project Manager	Possible Replacement		
Mortensen	Chat	9/1/21	ES	Bond	Efficiency & Future Ready	OZ	\$489,966	\$643,000	Bernadette Kelly	
Shaffer	Chat	9/1/21	ES	Bond	Efficiency & Future Ready	OZ	\$739,140	\$970,000	Bernadette Kelly	
Stony Creek	Chat	9/1/21	ES	Bond	Efficiency & Future Ready	OZ	\$1,082,040	\$1,420,000	Bernadette Kelly	
DW Playground I	JDW	9/1/21	DW	Bond	4 Schools - Peiffer 52,500, Governor's Ranch 94,500, Mt. Carbon 157,500 + paving budget 157,500, Glennon Heights 52,500	Design Concepts / Lime Green	\$392,049	\$514,500	Bernadette Kelly	
DW Playground II	JDW	9/1/21	DW	Bond	3 Schools - Campbell 63,000, Swanson 52,500, Fairmount 84,000	Design Concepts / Lime Green	\$152,019	\$199,500	Bernadette Kelly	
DW LED	JDW	9/1/21	DW	Bond	11 - Schools - Lawrence 132,300, Brady \$342,780 some in EFR, Bradford North 10,500, Bradford South 21,000, Ute Meadows 119,175, leawood 123,375, Normandy 144,900, Rooney Ranch 129,885, Creighton MS 311,006, Moore MS 254,691, Weber ES 124,142, Meiklejohn 163,866, West Woods 129,326,	Ackerman	\$1,529,293	\$2,006,946	Bill Thaemert	
DW Paving	JDW	9/1/21	DW	Bond	5 Schools - Campbell 446,250, Peiffer 210,000, S Lakewood 210,000, Little 195,300, Falcon Bluffs 73,500	JVA	\$864,908	\$1,135,050	Bill Thaemert	
Peck	Arvada	9/1/21	ES	Bond	Efficiency & Future Ready	Larson Incitti	\$1,911,096	\$2,508,000	Danelle Berzoza	
Secrest	Arvada	9/1/21	ES	Bond	Efficiency & Future Ready	Larson Incitti	\$1,193,292	\$1,566,000	Danelle Berzoza	
Oberon	Rvalley	9/1/21	MS	Bond	ADDITION	Larson Incitti	\$6,044,946	\$7,933,000	Danelle Berzoza	Replace with Creighton MS
Shelton	golden	9/1/21	ES	Bond	Efficiency & Future Ready	RTA	\$1,118,616	\$1,468,000	Doug Cooper	
Long View HS	OPT	9/1/21	ES	Bond	Efficiency & Future Ready	RTA	\$289,560	\$380,000	Doug Cooper	
Blue Heron	Dakota Ridge	9/1/21	ES	Bond	Efficiency & Future Ready	MOA	\$456,438	\$599,000	Ed Huszcza	
Colorow	Dakota Ridge	9/1/21	es	Bond	Efficiency & Future Ready	MOA	\$1,498,092	\$1,966,000	Ed Huszcza	
Edgewater	Jefferson	9/1/21	ES	Bond	ADDITION	MOA	\$4,157,472	\$5,456,000	Ed Huszcza	Replace with B Creek HS
Molholm	Jefferson	9/1/21	ES	Bond	ADDITION	HCM	\$4,883,658	\$6,409,000	Hilary Porter	Replace with Lakewood HS
Windy Peak	OELS	9/1/21	OELS	Bond	Efficiency & Future Ready	HCM	\$2,438,400	\$3,200,000	Hilary Porter	
Mt Evans	OELS	9/1/21	OELS	Bond	Efficiency & Future Ready	HCM	\$2,438,400	\$3,200,000	Hilary Porter	
DW Mechanical	JDW	9/1/21	DW	Bond	Campbell 645k, Fairmount 1.1 m, Falcon bluffs MS 525k, Little 1.6Mil, Van Arsdale 2.3m	Columbine Engineering	\$4,301,890	\$5,645,525	Kimber Preece	

North Arvada MS	Arvada	9/1/21	MS	Bond	Efficiency & Future Ready (LED Scope is Complete, FF&E is a separate project, percentage of Tech and security has been completed)	Eidos	\$1,786,116	\$2,397,119	Maggie Anderson	
Slater Elementary	W Ridge	9/1/21	ES	Bond	Efficiency & Future Ready (security Glass complete - percentage of Tech & Security has been completed)	Eidos	\$978,035	\$1,228,449	Maggie Anderson	
Wheat Ridge HS	W Ridge	9/1/21	HS	Bond	Efficiency & Future Ready + Turf Replacement (Track Complete \$400,050 - percentage of Tech & Security has been completed)	Eidos	\$10,201,964	\$13,338,779	Maggie Anderson	
Wilmore Davis	W Ridge	9/1/21	ES	Bond	Efficiency & Future Ready (Carpet 122k, Playground, security Glass complete - FF&E is a separate project, percentage of Tech & Security has been completed)	Eidos	\$790,398	\$1,032,142	Maggie Anderson	
Emory	Alameda	9/1/21	ES	Bond	Efficiency & Future Ready	Treanor HL	\$2,428,494	\$3,187,000	Pam Grover	
Red Rocks	BC	9/1/21	ES	Bond	Efficiency & Future Ready	Treanor HL	\$1,657,350	\$2,175,000	Pam Grover	
Westgate	BC	9/1/21	ES	Bond	Efficiency & Future Ready	Treanor HL	\$1,870,710	\$2,455,000	Pam Grover	
DW Flooring II	JDW	9/1/21	DW	Bond	7 Schools - Swanson, Glennon Heights, S Lakewood, Little, Parr, Van Arsdale, Pennington	Treanor HL	\$800,100	\$1,050,000	Pam Grover	
Awest HS	Awest	9/1/21	HS	Bond	Efficiency & Future Ready	LOA	\$1,273,477	\$1,671,230	Sam Miller	
Warren OTC North	Awest	9/1/21	OTC	Bond	Efficiency & Future Ready	LOA	\$333,605	\$437,802	Sam Miller	
Warder	Pomona	9/1/21	ES	Bond	Efficiency & Future Ready	RB+B	\$816,102	\$1,071,000	Sam Miller	
Mandalay	slake	9/1/21	ES	Bond	Efficiency & Future Ready	RB+B	\$1,424,178	\$1,869,000	Sam Miller	
Mitchell	golden	9/1/21	ES	Bond	Efficiency & Future Ready	H&M / BVH / EUA	\$684,276	\$898,000	Ted Hagan	
Elk Creek	Con	9/1/21	ES	Bond	Efficiency & Future Ready	H&M / BVH / EUA	\$760,476	\$998,000	Ted Hagan	
West Jeff	Con	9/1/21	ES	Bond	Efficiency & Future Ready	H&M / BVH / EUA	\$550,926	\$723,000	Ted Hagan	
Bergan Meadow	Evergreen	9/1/21	ES	Bond	Efficiency & Future Ready	H&M / BVH / EUA	\$4,276,123	\$5,586,000	Ted Hagan	Replace with Golden HS
Bergan Valley	Evergreen	9/1/21	ES	Bond	Efficiency & Future Ready	H&M / BVH / EUA	\$284,988	\$374,000	Ted Hagan	
Thomson	Arvada	9/1/21	ES	Bond	Efficiency & Future Ready	Sybazz/ Intergroup	\$1,664,970	\$2,185,000	Troy Antill	
Green Mountain	G Mtn	9/1/21	ES	Bond	Efficiency & Future Ready	Sybazz	\$1,011,936	\$1,328,000	Troy Antill	
Stevens WR 5-8	W Ridge	9/1/21	ES	Bond	Efficiency & Future Ready	Sybazz	\$1,633,728	\$2,144,000	Troy Antill	
DW Flooring I	JDW	9/1/21	DW	Bond	7 Schools - Dear Creek MS, Falcon Bluffs MS, Summit Ridge MS, Peiffer, Governor's Ranch, Mt Carbon, Rooney Ranch,	Sybazz	\$800,100	\$1,050,000	Troy Antill	
DW Roofing I	JDW	9/1/21	DW	Bond	5 schools - Summit Ridge MS 1,142,994, Swanson-202,965, Campbell 273,000, Fairmount 258,825, S Lakewood 467,024, Little 66,289, Parr 578,656, Pennington 708,902	Cave, WJE, SRDK, Roof Tech	\$2,172,268	\$2,850,745	Troy Antill	
DW Security Glass	JDW	9/1/21	DW	Bond	12 schools - Swanson, Awest, Campbell, Fairmount, BCK8, Summit Ridge MS, Glennon Heights, S Lakewood, Little, Parr, Pennington,	In House	\$73,152	\$96,000	Troy Antill	
Elevators	JDW	9/1/21	DW	Bond	Elevator Upgrades 2022	Kone	\$350,000	\$350,000	David Curnow	
Temp Removal	JDW	9/1/21	DW	Bond	Modular Bldg Removal 2022	In House	\$450,000	\$450,000	David Curnow	



Next Meeting 4/15/21

2018 BOND PROGRAM COMMUNICATIONS UPDATE CAPITAL ASSET ADVISORY COMMITTEE MARCH 2021

COMPLETED WORK:

- Produced Lumberg Groundbreaking event:
 - ["This is Going to Be Your New Home"](#) - video on JPS TV
 - [EdgeWater Echo story](#)
 - [Facebook Live](#)
- Jefferson Beam Signing (Images Below)
- Board site tour with Susan Harmon
- Produced Video: [Building Design Preview](#)
- [Denver 7 story](#) (ran in early March)

Website analytics:

Jeffcobuilds.org and all pages with "jeffco builds" in the URL (ie sub-pages)

Jeffco Builds page performance	Page views	Unique page views
February 2021	1,360	1,188
March 2021	1,993	1,741
% change	47% increase	46% increase

UPCOMING WORK:

- Events:
 - Kendrick Lakes Ribbon cutting - March 16 (@ 1:30)
 - Kendrick Lakes Media Tour - March 6
 - Building out newsfeed (external news) for JeffcoBuilds
- Website refresh:
 - Updating the navigation of the page
 - Streamlining homepage design/layout

